

Stylish design screwless at sight

Aligned front and rear mounting brackets for ease of motor installation

High technological materials resistant to weather conditions

Extremely silent mechanics, protected by robust die-cast and powder-coated aluminum body





CONTROL UNIT CT20324

+ CT20324 New 5-character / 16-segment display for more natural and intuitive reading

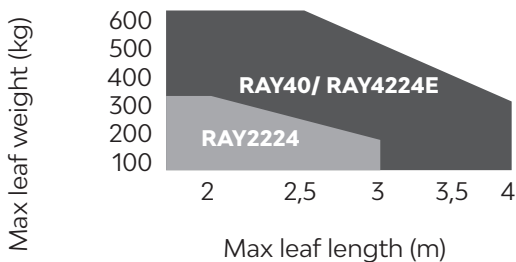
+ KUBEPRO Optional programming with KUBE PRO wireless module (from Firmware version 2.0 and new smartphone app to be released in July 2024).



MODELS

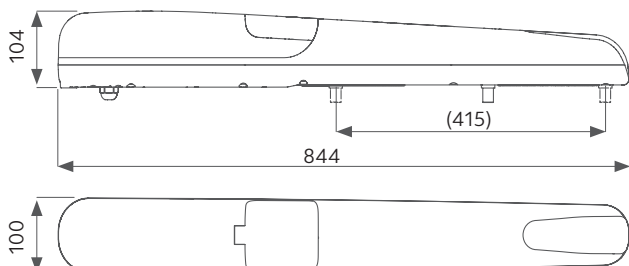
CODE	DESCRIPTION	PCS PALLET
RAY40	For swing gates with maximum length 4 m or max weight 600 kg per leaf, 230 Vac motor. Residential use	25
  RAY2224	For swing gates with maximum length 3 m or max weight 300 kg per leaf, 24 Vdc motor. Residential use	25
  RAY4224E	For swing gates with maximum length 4 m or max weight 600 kg per leaf, 24 Vdc motor with encoder. Intensive use	25

LIMIT USE



Gate shape and height and weather conditions can considerably reduce the values shown above, in the graph. 230 Vac motors are suggested for windy areas. The RAY4224E model is recommended for condominium installations.

DIMENSIONS



TECHNICAL DATA

		RAY40	RAY2224	RAY4224E
MECHANICAL DATA				
speed	cm/s	1,6	2,6	1,5
pulling force	N	2000	1500	2000
cycles/hour **		25	40	40
opening time at 90°	sec	20-25*	18-25*	20-25*
ELECTRICAL DATA				
control board		CT202	CT20324	CT20324E
power	Vac	230	-	-
	Vdc	-	24	24
consumption	A	1,2	3,5	5
absorbed power	W	280	85	120
capacitor	µF	8	-	-
thermoprotection	°C	150	-	-
GENERIC DATA				
protection degree	IP	44	44	44
dimensions (L - D - H)	mm		844 - 100 - 104	
weight	kg cad	10,2	8	9,3
working temperature	°C	-20 + 55	-20 + 55	-20 + 55
leaves maximum weight	kg	600	300	600

* With optimal installation dimensions.
 ** The cycles now indicated are intended with a non-paneled door at an ambient temperature of 20 °C.

ACCESSORIES



ADF B
Pair of adjustable front mounting brackets

PC 1



ADR B
Pair of adjustable rear mounting brackets

PC 1



ADWA
Adapter kit for competitors motors

PC 1



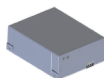
FCRAY
Mechanical stop in closing

PC 1



ELS-C
12 V horizontal electric lock. Up to 2000 kg

PC 1



KBP
Kit of 1.3 Ah lead battery and battery charger

PC 1



KITFIXBATT
Fixing brackets for batteries 24V

PC 1



KC
Unlock key cylinder

PC 1



EXRB
Extension bracket for outside opening

PC 1



STAF032A00
Adapting rear bracket

PC 1



CT20324
Control unit 2 motors, 24 Vdc in box (only RAY2224)

PC 1



CT20324E
Control unit 2 motors, 24 Vdc in box (only RAY2224E)

PC 1



CT202
Control unit in box for two 230 Vac motors (only RAY40)

PC 1



RX4K
4-channel plug-in receiver, 433MHz, for CT202 control unit

PC 1



KUBEPRO
Wireless module for programming

PC 1



KUBE
Wireless controlling module for end user

PC 1