

Aligned front and rear mounting brackets for ease of motor installation

Built-in LED light mask

High technological materials resistant to weather conditions

Extremely silent mechanics, protected by robust die-cast and powder-coated aluminum body

NIGHT LIGHT SYSTEM

Concept that combines the comfort of an automatic gate with the use of LED lighting to illuminate your entrance over night

- + SAFETY
- + COMFORT
- + SAVING

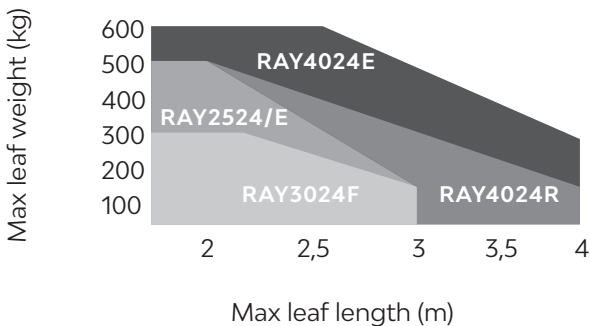
Ease the night vision
Defines the driveway passage during the night
Allows lower power consumption



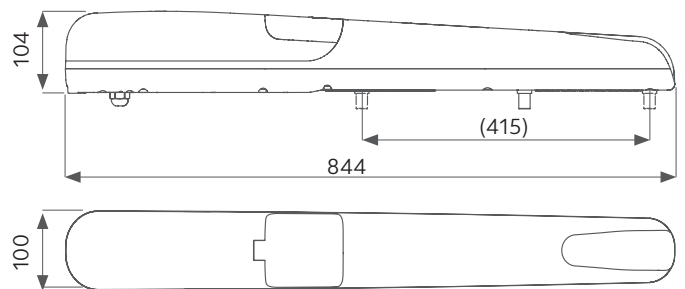
MODELS

CODE	DESCRIPTION	PCS PALLET
RAY2524	For swing gates with maximum length 3 m or max weight 500 kg per leaf, 24 Vdc motor. Residential use	25
RAY2524E	For swing gates with maximum length 3 m or max weight 500 kg per leaf, 24 Vdc motor, with encoder. Residential use	25
RAY4024E	For swing gates with maximum length 4 m or max weight 600 kg per leaf, 24 Vdc motor, with encoder. Residential use	25
KRAY4024R	For swing gates with maximum length 4 m or max weight 500 kg per leaf, 24 Vdc motor, reversible, included of power module PO24R, with encoder. Intensive use	25
RAY3024F	For swing gates with maximum length 3 m or max weight 300 kg per leaf, 24 Vdc motor, with encoder. Intensive use	5

LIMIT USE




DIMENSIONS



Gate shape and height and weather conditions can considerably reduce the values shown above, in the graph. 230 Vac motors are suggested for windy areas. The RAY4024 model is recommended for condominium installations.

TECHNICAL DATA

		RAY2524	RAY2524E	RAY4024E	KRAY4024R	RAY3024F
MECHANICAL DATA						
speed	cm/s	2,6	2,6	1,5	3	3,8
pulling force	N	1500	1500	2000	1000	1000
cycles/hour **		40	40	40	40	40
opening time at 90°	sec	18-25*	18-25*	20-25*	20-25*	10-15*
ELECTRICAL DATA						
control board		14AB	14AB	14AB2	14AB2	14AB2F 
power	Vdc	24	24	24	24	24
consumption	A	3,5	3,5	5	5	5
absorbed power	W	85	85	120	120	120
integrated lights		yes	yes	yes	yes	yes
GENERIC DATA						
protection degree	IP	44	44	44	44	44
dimensions (L - D - H)	mm			844 - 100 - 104		
weight	kg cad	8,01	9,65	9,3	9,4	9,3
working temperature	°C	-20 + 55	-20 + 55	-20 + 55	-20 + 55	-20 + 55
leaf maximum weight	kg	500	500	600	500	300

* With optimal installation dimensions.

** The cycles now indicated are intended with a non-paneled door at an ambient temperature of 20 °C.

ACCESSORIES



ADFB

Pair of adjustable front mounting brackets

PC 1



ADRB

Pair of adjustable rear mounting brackets

PC 1



ADWA

Adapter kit for competitors motors

PC 1



FCRAY

Mechanical stop in closing

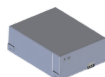
PC 1



ELS-C

12 V horizontal electric lock. Up to 2000 kg

PC 1



KBP

Kit of 1.3 Ah lead battery and battery charger

PC 1



KITFIXBATT

Fixing brackets for batteries 24V

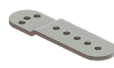
PC 1



KC

Unlock key cylinder

PC 1



EXRB

Extension bracket for outside opening

PC 1



STAF032A00

Adapting rear bracket

PC 1



550CABL045A00 *

Special cable for Eclipse flash light RG174 50 Ohm + 4 x 0,50 mm² (100m)

PC 1



14AB2

Control unit in box for two 24 Vdc motors

PC 1



14AB2F

Control unit in box for two 24 Vdc motors(only RAY3024F)

PC 1



DYL

Programming module
Cable length
120 cm (only 14A board)

PC 1



KUBepro

Wireless programming module

PC 1



KUBE

Wireless controlling module for end user

PC 1

* it is not recommended to use a connection longer than 4 m to avoid sensible loss of reach