


# STAR

ELECTROMECHANICAL GEAR MOTOR FOR SWING GATES WITH LEAVES UP TO 3 m, 24 Vdc



## MODELS

CODE	DESCRIPTION	PCS PALLET
 <b>STAR3024</b>	For swing gates with maximum length 3 m per leaf, pair of irreversible 24 Vdc motors, without encoder (2 pcs, left and right)	21

## PLUS

Version without encoder

Easy slowdown and open limit settings

Mechanical parts well protected from external debris

Compatible with control unit CT20224

Available in kit version

Motor up to 3 m max length



Sturdy telescopic stem



Robust gears and mechanical parts



New version without encoder



Metallic release system

## TECHNICAL DATA

### STAR3024

#### MECHANICAL DATA

speed	cm/s	2,5
pulling force	N	1400
working cycle	%	80
opening time at 90°	sec	18-25

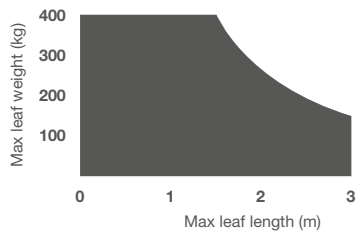
#### ELECTRICAL DATA

control board		CT20224
power	Vdc	24
consumption	A	3,5
absorbed power	W	85

#### GENERIC DATA

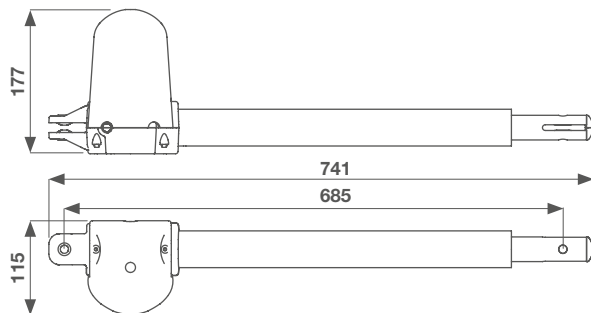
protection degree	IP	54
dimensions (L - D - H)	mm	741 - 115 - 177
weight	kg cad	3,2
working temperature	°C	-20 + 55
leaves maximum weight	Kg	400

## LIMIT USE



Gate shape and height and weather conditions can considerably reduce the values shown above, in the graph.

## DIMENSIONS

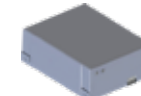


## ACCESSORIES



**ELS-C**  
Horizontal 12 V  
electrolock

PC 1



**KBP**  
Battery back-up kit

PC 1



**KITFIXBATT**  
Fixing brackets for batteries

PC 1



**CT20224**  
Control unit in box for two 24  
Vdc motors

PC 1



**EGS101**  
Key selector with  
all-metal body

PC 1



**TS**  
Warning board

PC 1